

- **Who needs to do this?**

If you use **Mac OS 10.6.x ‘Snow Leopard’**, with **Adobe Photoshop CS4** and an **Epson Printer** (*All Three Must apply!*) to create your targets, you may need use these special instructions. I say “may need to” because there are too many variables to pin down - When in doubt, use these instructions or call / email me for clarification.

- **Why do you need to do this?**

With this particular combination of Apple, Adobe and Epson software, it’s possible that a major “glitch” exists: **You cannot print a file with “No Color Management”** - which is an essential element in creating a custom printer profile – even though the *“No Color Management”* option is still available under the *“Color Handling”* drop-down menu in **Photoshop’s Print Dialog Box**.

Bottom line: Creating profiles with the method below is essentially a "hack" – It is called “Null Transform” – but it’s quite effective even if it’s a tiny bit complicated. **Adobe will “fix” this by releasing a free application to print files without Color Management shortly.** When it’s available, a link will be posted on my blog: <http://blog.main.wattsdigital.com> ...

- **So, how do you do this?**

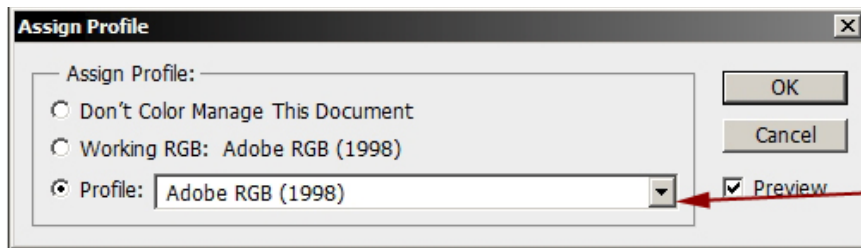
Easily, in 4 steps:

1. **Download the CS4 PDF**
2. **Insert a Procedure**
3. **Replace a Procedure**
4. **Continue on with the PDF**

Step 1) Download the [“Creating and Using Custom Printer Profiles in Photoshop CS4”](#) PDF, then follow the instructions until the **“Important” Note in Red** on **page 2** right after item **“B”** ...

Step 2) On **Page 2**, **Insert** this procedure between **Steps B** and **C**. After completed, proceed to Step C:

Assign a Profile to Each Target: Go to the *“Edit”* Menu, then choose *“Assign Profile ...”*. Choose: *“Profile - > “Adobe RGB”*. Click *“OK”*, - - *Don’t forget, you will need to do this for BOTH Targets.*

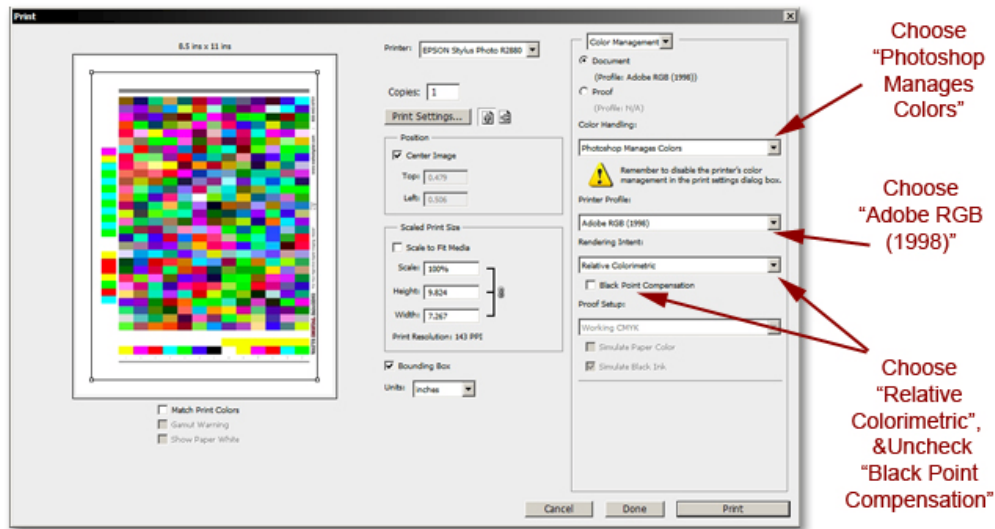


Choose
“Adobe RGB (1998)”
from the
Drop-Down List

Step 3) On Page 3, Ignore and Replace Step E completely with this procedure:

Do the following (see illustration below):

- 1) In the “Color Handling” Drop-Down Menu, choose “*Photoshop Manages Colors*”
- 2) In the “Printer Profile” Drop-Down Menu, choose “*Adobe RGB (1998)*”
- 3) In the “Rendering Intent” Drop-Down Menu, choose “*Relative Colorimetric*”
- 4) Uncheck “*Black Point Compensation*”



Step 4) On Page 3, continue on and finish the instructions, starting with and including Step F ...

Questions? Comments? Please feel free to contact me ...

Thanks, and Cheers!

John Watts
Watts Digital Imaging
Santee, CA
800-443-9701
<http://www.wattsdigital.com>
john@wattsdigital.com